

To send data from any JETCO torque product to the computer, without special software, you can use HyperTerminal (supplied standard with Microsoft Windows):

HyperTerminal allows your computer to communicate with your serial com port and accept data from the torque device.

INSTRUCTIONS:

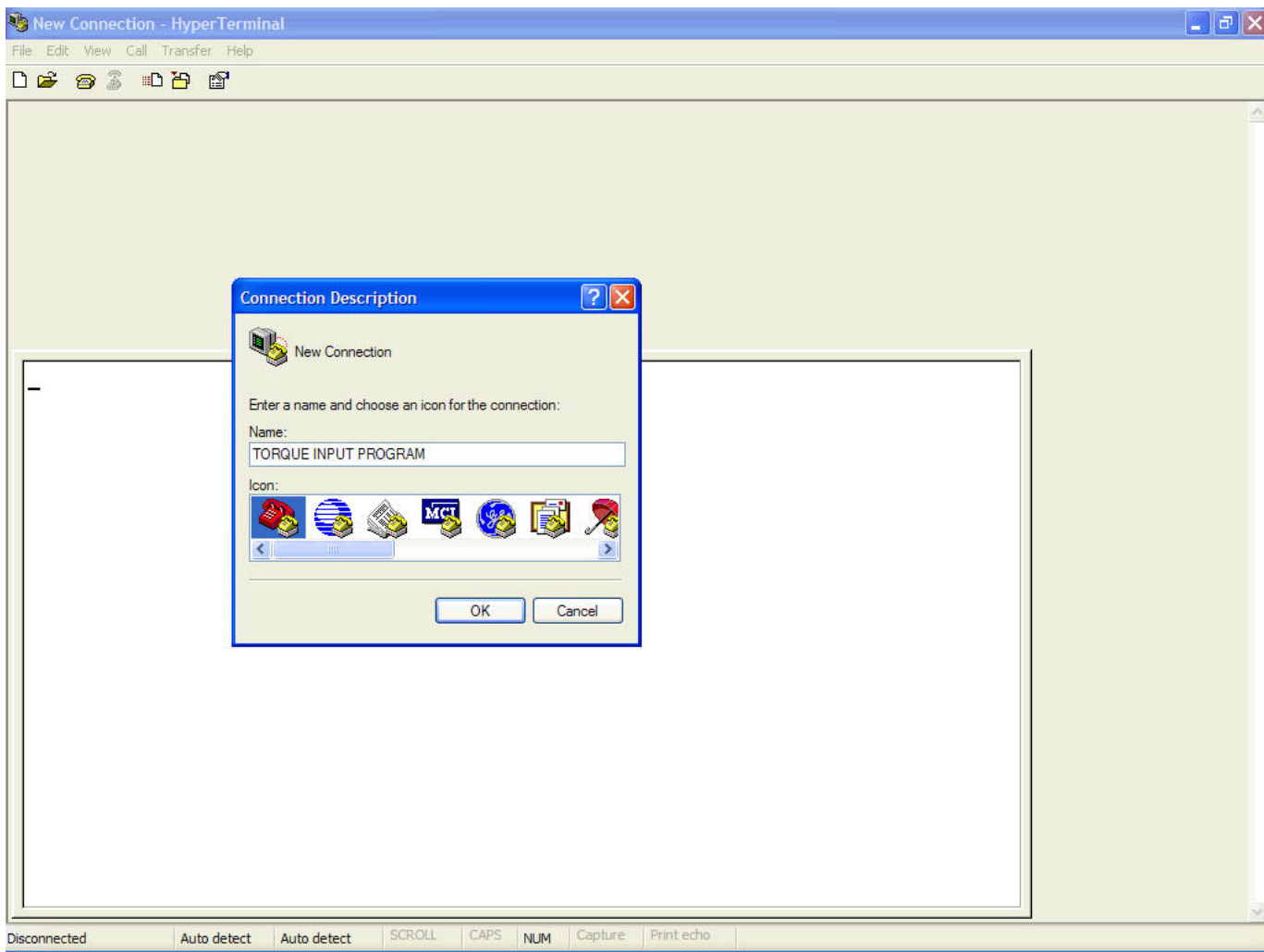
To start the HyperTerminal program do the following:

On your desktop, using your mouse, select:

START---PROGRAMS-----ACCESSORIES-----COMMUNICATIONS-----
HyperTerminal

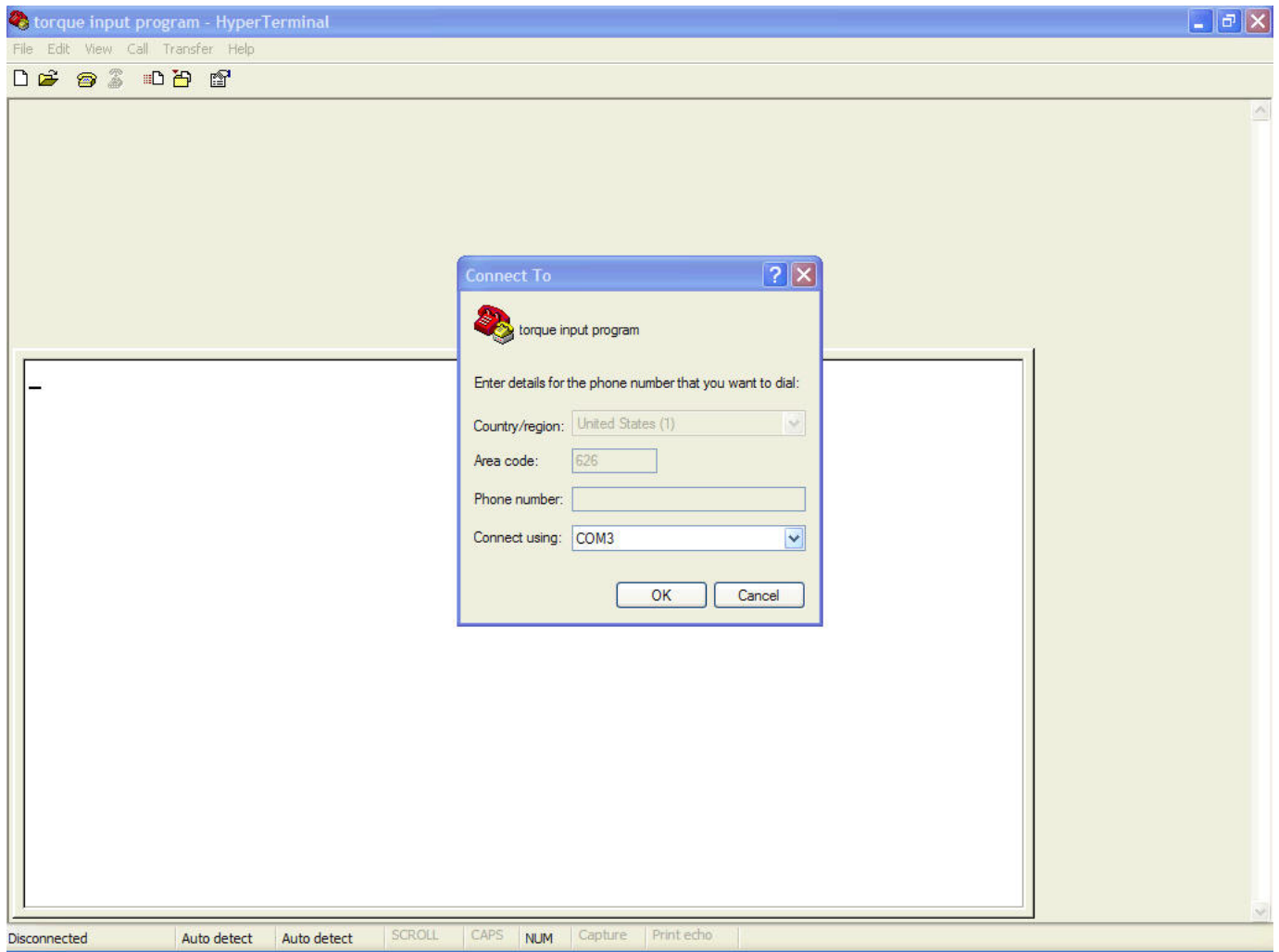
Hyperterminal will start and you will see the following screen:

IF YOU CANNOT SEE THESE WINDOWS CLEARLY ON YOUR SCREEN PLEASE PRINT THEM OUT
AND READ THE HARDCOPY



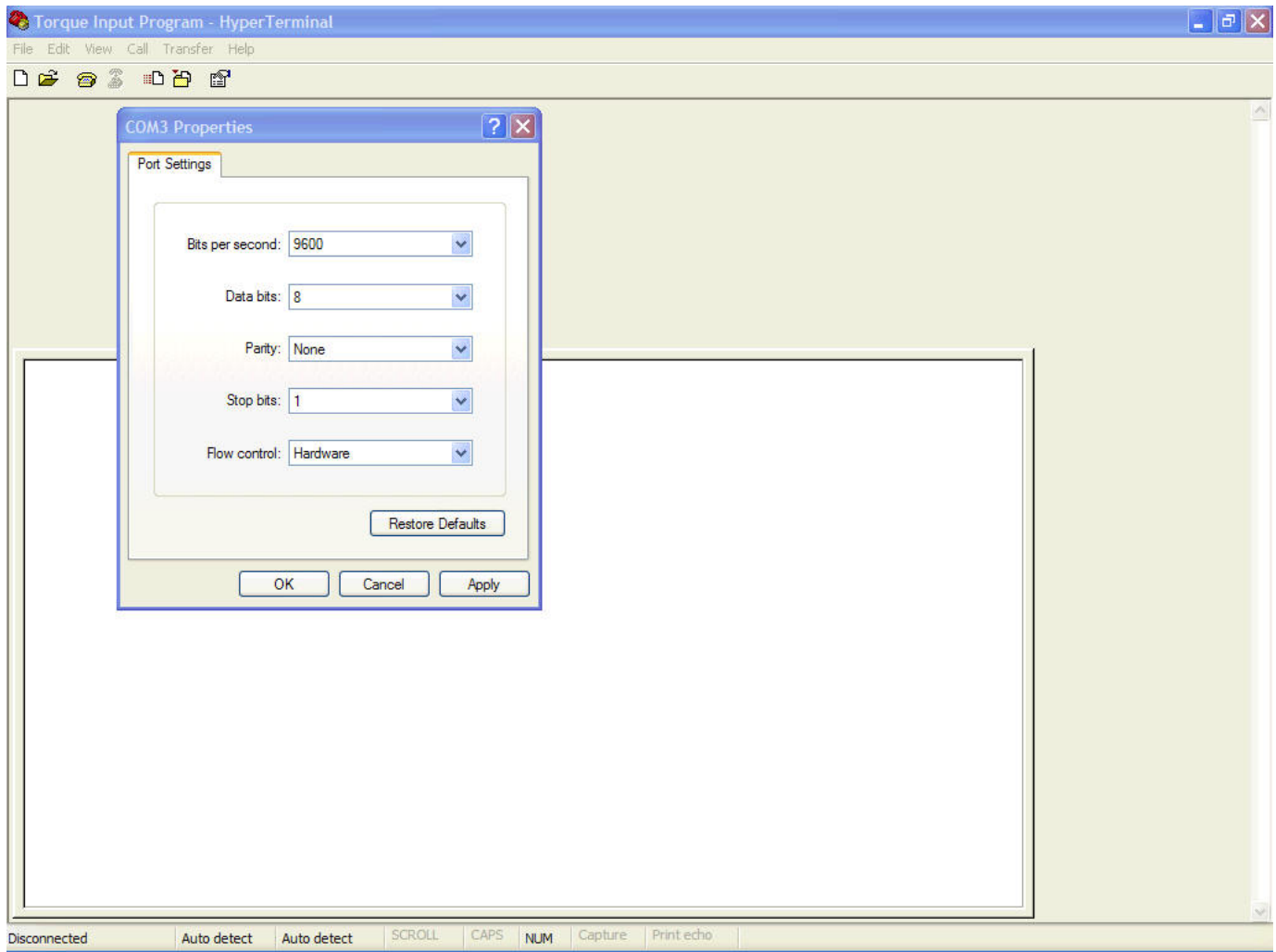
You can name the file whatever you want but we have named it "Torque Input Program" for this example

The Next Screen asks you to select where to connect to. Select the com port that pertains to your connection with the torque tool (here it is shown as com 3 but yours is probably com 1 or com 2).



The next screen asks you to setup the communication properties. These values are very important. The following shows the values needed to communicate with the TED tester series, the Electronic Dial Wrench series (ED) and the SuperDuty torque wrench series: 9600 bps, 8 data bits, Parity none, 1 Stop bit, Hardware flow control

If your are connecting a TTS-1000 torque meter all properties are the same except the baud rate is 4800 bps.



The example is for the TED Testers, ED dial wrenches and the Ex (SuperDuty) wrench.

Once the software is complete make sure the screen shows connected at the bottom, if it is not select the call button at the top of the screen.

To send data from the torque product to the HyperTerminal program press either the save key, the clear key or the print key depending on what product you are using (see the operation manual for specific instruction on how to send data).

Troubleshooting:

If you do not see the information on the screen:

1. Try connecting and disconnecting the HyperTerminal program
2. Try a different Com port.
3. If you are using the TTS-1000 make sure the meter is in Peak Hold or First Peak mode.
4. Make sure the connections are good.

JETCO 626-359-2881 Fax: 626-359-8315 www.itorque.com