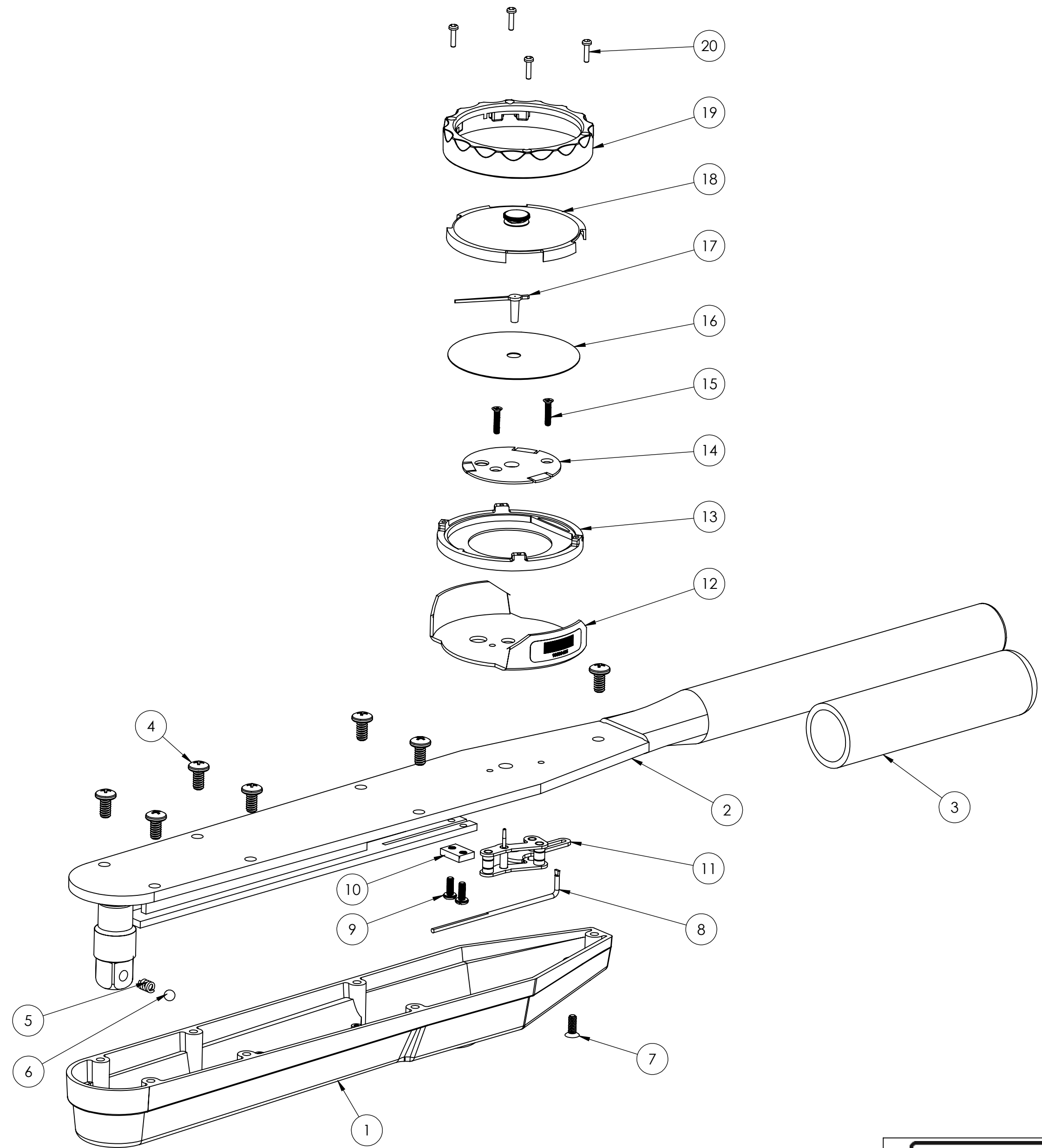


MECHANICAL DIAL TORQUE WRENCH		
PART NO.	D3-175F	D3-250F
TORQUE RANGE	0-175 ft-lb (0-250 N-m)	0-250 ft-lb (0-350 N-m)
DRIVE	1/2"	1/2"
GRADUATIONS	5 ft-lb (5 N-m)	5 ft-lb (5 N-m)

ITEM NO.	DESCRIPTION	QTY / ASSY	MECHANICAL DIAL TORQUE WRENCH ASSEMBLY NO.	
			D3-175F	D3-250F
1	HOUSING	1	38-0011	
2	TOP PLATE ASSY	1	38-0016	38-0017
3	RUBBER GRIP	1	81-0111	
4	TOP PLATE SCREW	7	60-0018	
5	SPRING	1	81-0110	
6	BALL	1	81-0064	
7	BATTERY COVER SCREW	1	60-0017	
8	PUSH BAR	1	81-0071	
9	SCREW	2	60-0044	
10	PUSH BAR CLAMP	1	81-0087	
11	JEWEL MOVEMENT	1	1730	
12	DIAL GUARD	1	81-0076	
13	FOLLOWER SHELL	1	81-1049	
14	FIXED SHELL	1	81-0073	
15	SCREW	2	60-0003	
16	SCALE	1	81-0077	
17	NEEDLE INDICATOR	1	81-0119-L	
18	MEMORY NEEDLE ASSY	1	81-1059	
19	DIAL BEZEL	1	81-1048	
20	BEZEL SCREW	4	60-0047	



**UNCONTROLLED COPY**

THE INFORMATION IN THIS DOCUMENT IS SUBJECT TO CHANGE WITHOUT NOTICE

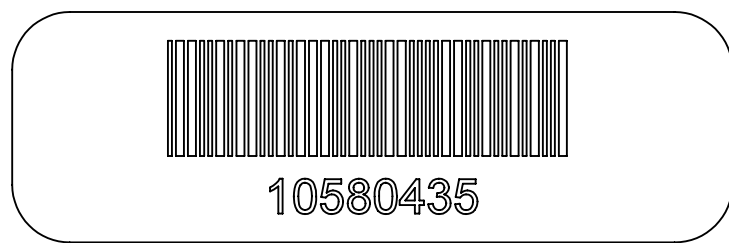
<b>JETCO</b> <small>A Schwalbe Group Company Torque Tools LLC</small>	
TITLE <b>D3 MECHANICAL DIAL TORQUE WRENCH SPARE PARTS DIAGRAM</b>	
DWG NO. <b>35-0005</b>	SHEET 1 OF 2
	SIZE C

UNLESS OTHERWISE SPECIFIED DIMENSIONS ARE IN INCHES

**NOTES:**

1 LASER ETCH SERIAL NUMBER IN THE LOCATION SHOWN

2 APPLY SERIAL NUMBER/BAR CODE LABEL IN THE LOCATION SHOWN



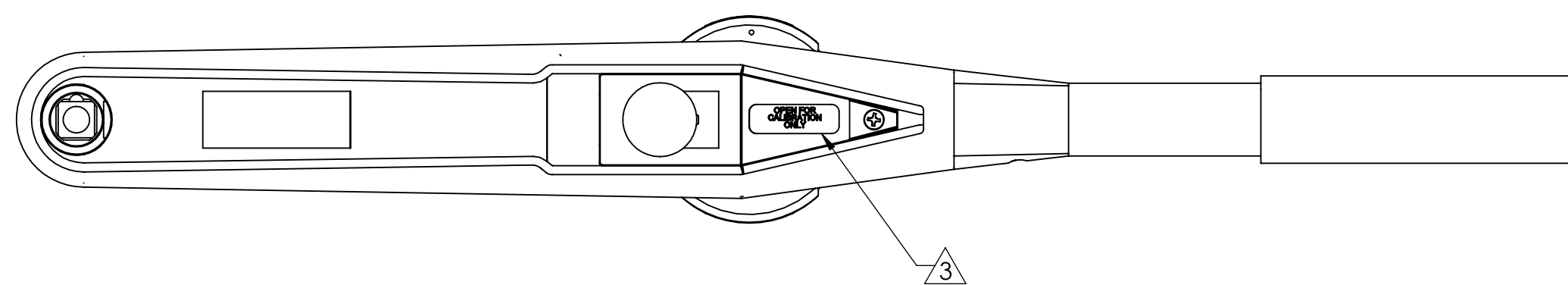
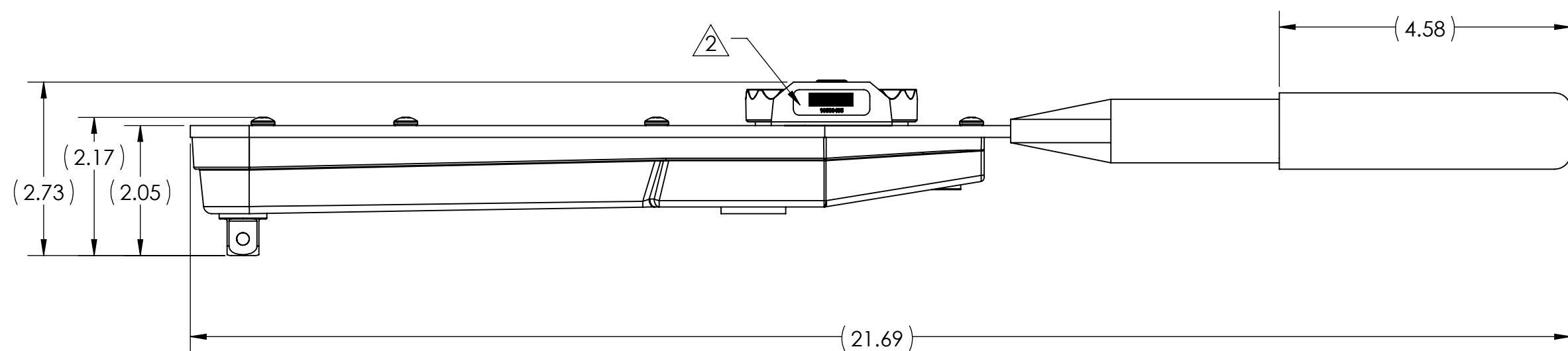
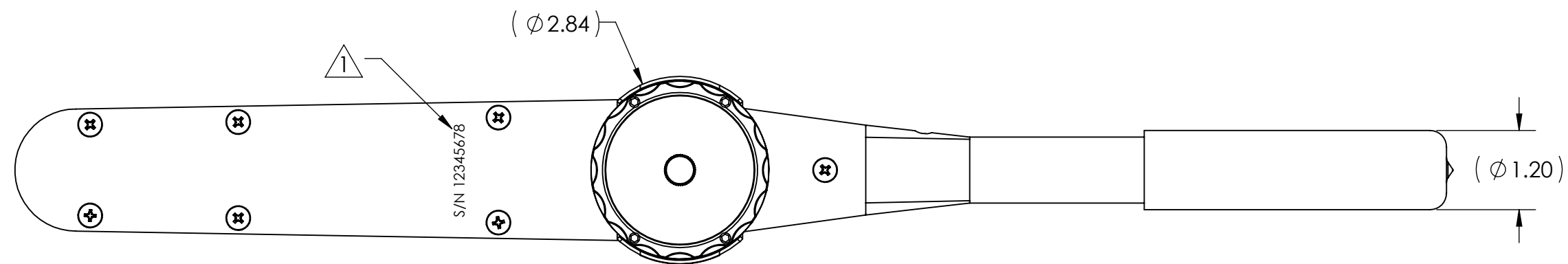
3 APPLY CALIBRATION LABEL ON THE SIDE OF THE DIAL GUARD AS SHOWN



4 FOR REFERENCE ONLY:



**D3 MECHANICAL TORQUE WRENCH**



**UNCONTROLLED COPY**

THE INFORMATION IN THIS DOCUMENT IS SUBJECT TO CHANGE WITHOUT NOTICE



TITLE  
**D3 MECHANICAL DIAL TORQUE WRENCH SPARE PARTS DIAGRAM**

DWG NO. **35-0005** SHEET **2 OF 2**  
SIZE **C**

UNLESS OTHERWISE SPECIFIED DIMENSIONS ARE IN INCHES