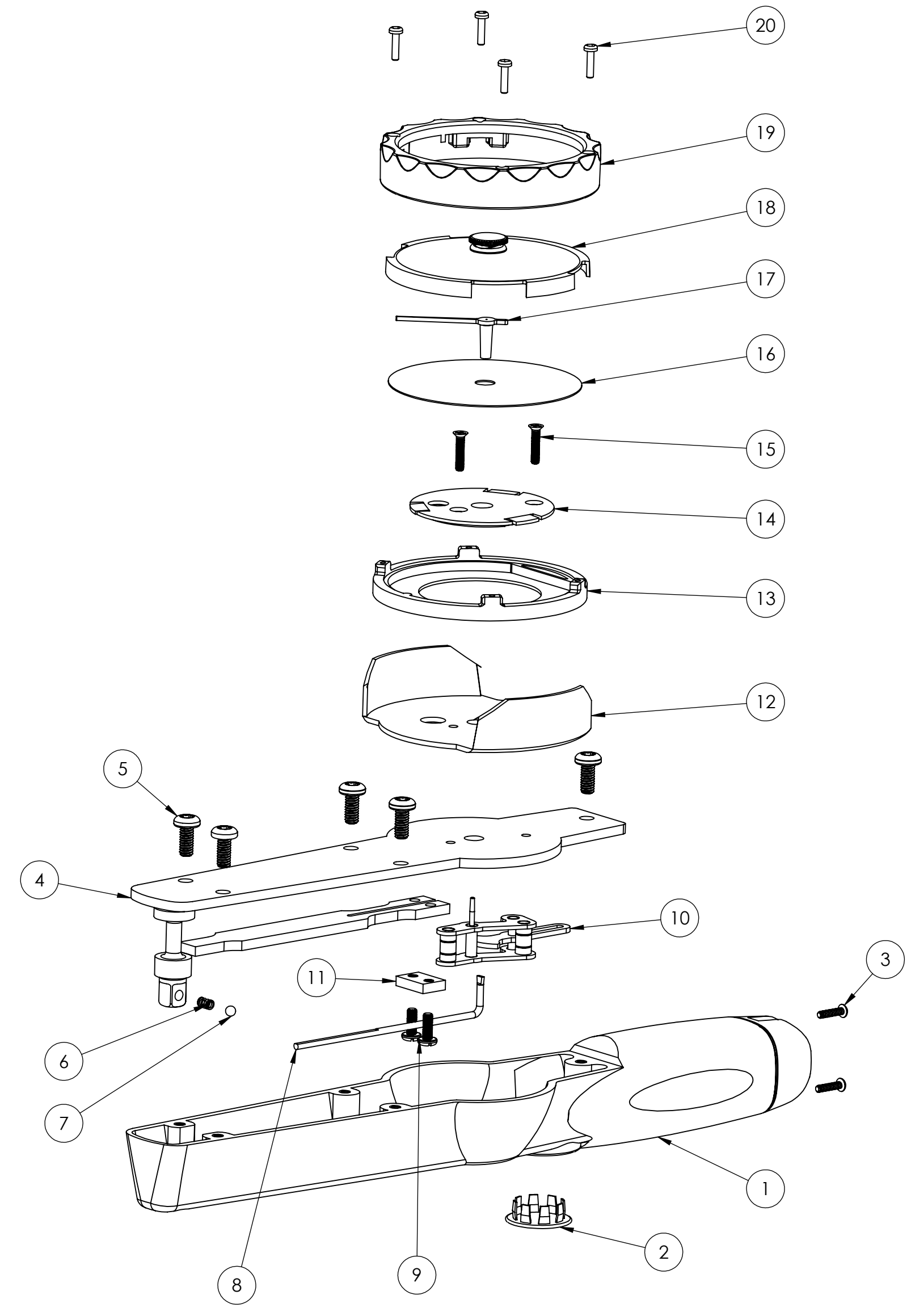


MECHANICAL DIAL TORQUE WRENCH						
JETCO MODEL NO.	D1-30IN	D1-75IN	D1-150IN	D1-250IN	D1-600IN	D1-50F
TORQUE RANGE	0-30 in-lb (0-3.5 N-m)	0-75 in-lb (0-9 N-m)	0-150 in-lb (0-17 N-m)	0-250 in-lb (0-30N-m)	0-600 in-lb (0-70 N-m)	0-50 ft-lb (0-70N-m)
DRIVE	1/4"	1/4"	3/8"	3/8"	3/8"	3/8"
GRADUATIONS	0.5 in-lb (0.1N-m)	1 in-lb (0.2 N-m)	2 in-lb (0.5 N-m)	5 in-lb (0.5 N-m)	10 in-lb (2 N-m)	1 ft-lb (2 N-m)

ITEM NO.	DESCRIPTION	QTY / ASSY	MECHANICAL DIAL TORQUE WRENCH ASSEMBLY NO.				
			D1-30IN	D1-75IN	D1-150IN	D1-250IN	D1-600IN
1	HANDLE	1	38-0001				
2	PLUG	1	81-0102				
3	SCREW	2	81-0042				
4	TOP PLATE ASSY	1	38-0010	38-0005	38-0009	38-0012	38-0004
5	TOP PLATE SCREW	5	60-0004				
6	SPRING	1	81-0094				
7	BALL	1	81-0096				
8	PUSH BAR	1	81-0071				
9	SCREW	2	60-0044				
10	JEWEL MOVEMENT	1	1730				
11	PUSH BAR CLAMP	1	81-0087				
12	DIAL GUARD	1	81-0076				
13	FOLLOWER SHELL	1	81-1049				
14	FIXED SHELL	1	81-0073				
15	SCREW	2	60-0003				
16	BLANK SCALE	1	81-0077				
17	NEEDLE INDICATOR	1	81-0119-L				
18	MEMORY NEEDLE ASSY	1	81-1059				
19	DIAL BEZEL	1	81-1048				
20	BEZEL SCREW	4	60-0047				



UNCONTROLLED COPY
THE INFORMATION IN THIS DOCUMENT IS SUBJECT TO CHANGE WITHOUT NOTICE

JETCO
Torque Tools I.L.C.

TITLE
D1 MECHANICAL DIAL TORQUE WRENCH SPARE PARTS DIAGRAM

DWG NO. **35-0004**

SHEET **1 OF 2**

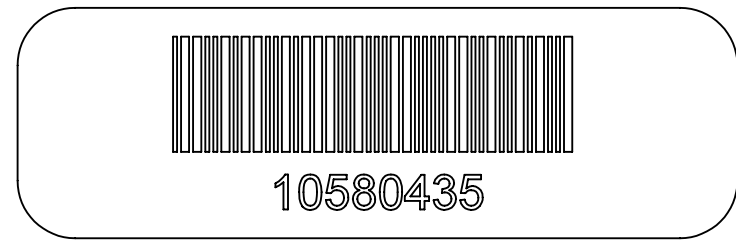
SIZE **C**

UNLESS OTHERWISE SPECIFIED DIMENSIONS ARE IN INCHES

NOTES:

1 LASER ETCH SERIAL NUMBER IN THE LOCATION SHOWN

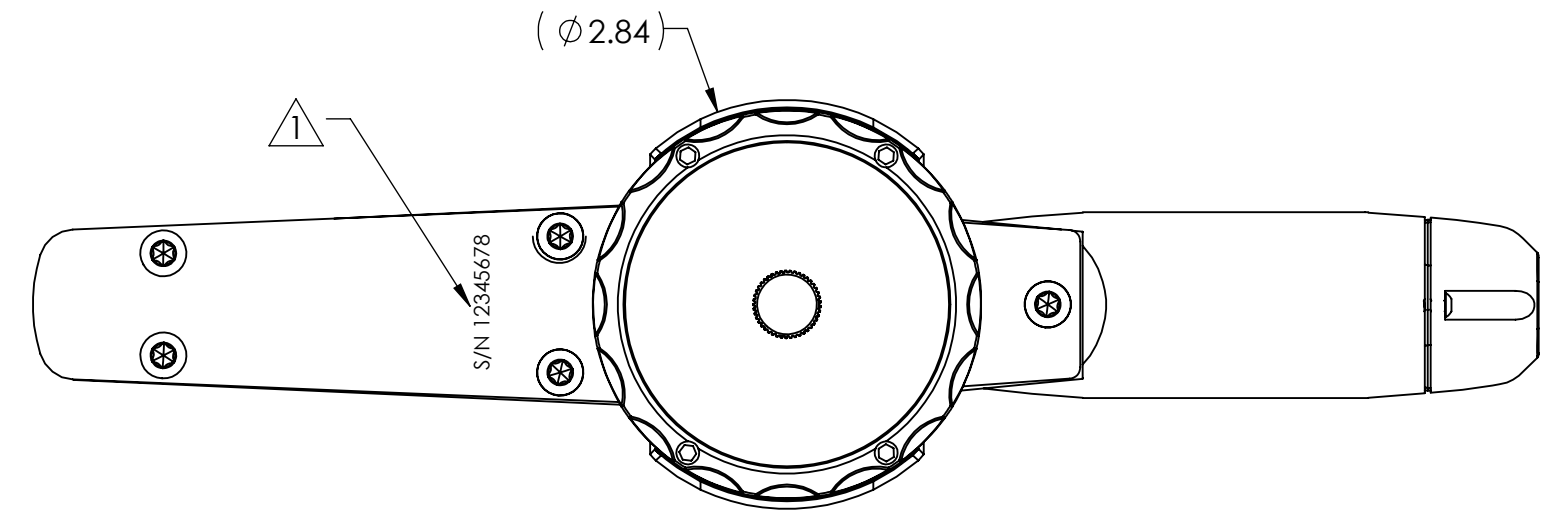
2 APPLY SERIAL NUMBER/BAR CODE LABEL IN THE LOCATION SHOWN



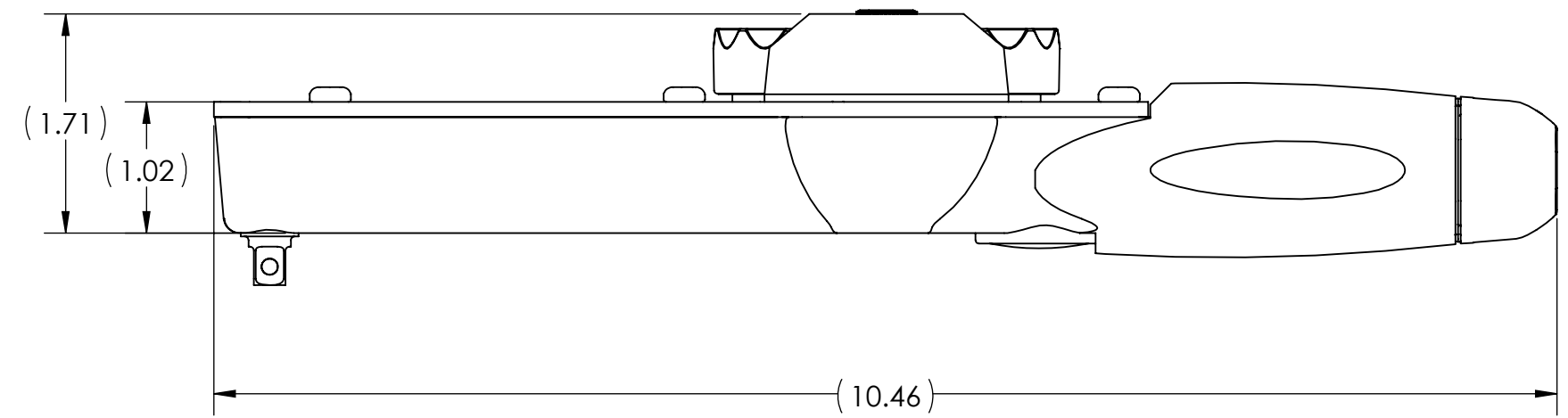
3 FOR REFERENCE ONLY:



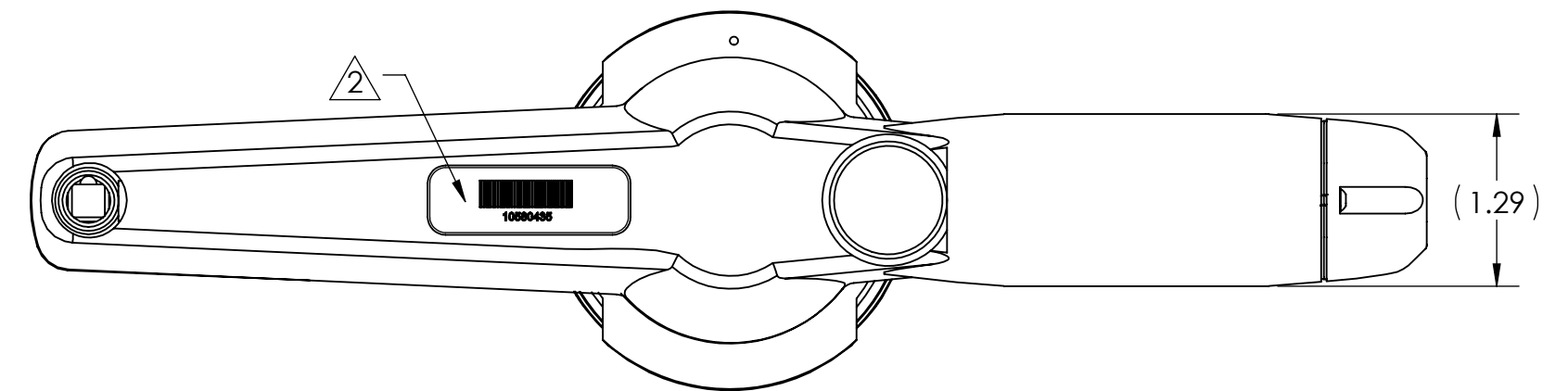
D1 MECHANICAL TORQUE WRENCH
SCALE WILL VARY



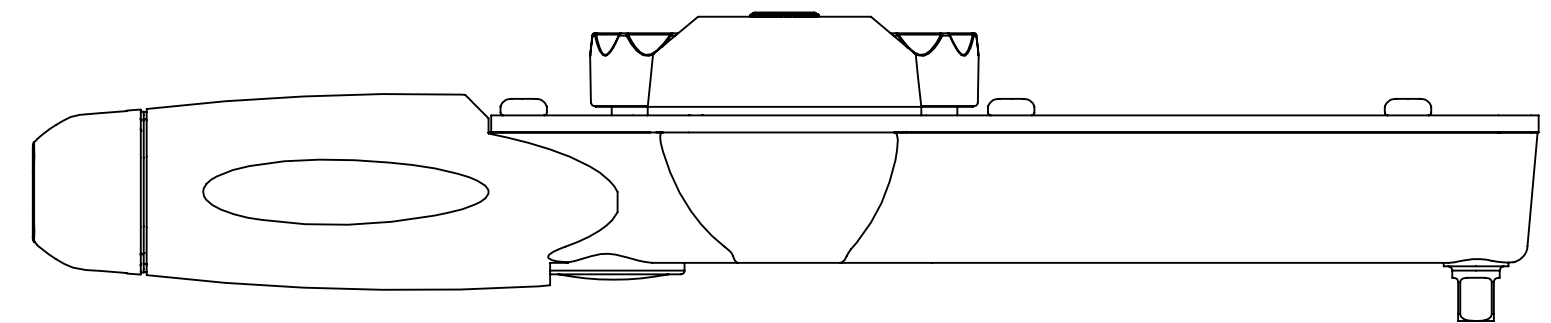
TOP VIEW



LEFT SIDE VIEW



BOTTOM VIEW



RIGHT SIDE VIEW

UNCONTROLLED COPY

THE INFORMATION IN THIS DOCUMENT IS SUBJECT TO CHANGE WITHOUT NOTICE



TITLE
D1 MECHANICAL DIAL TORQUE WRENCH SPARE PARTS DIAGRAM

DWG NO. **35-0004** SHEET **2 OF 2**
SIZE **C**

UNLESS OTHERWISE SPECIFIED DIMENSIONS ARE IN INCHES