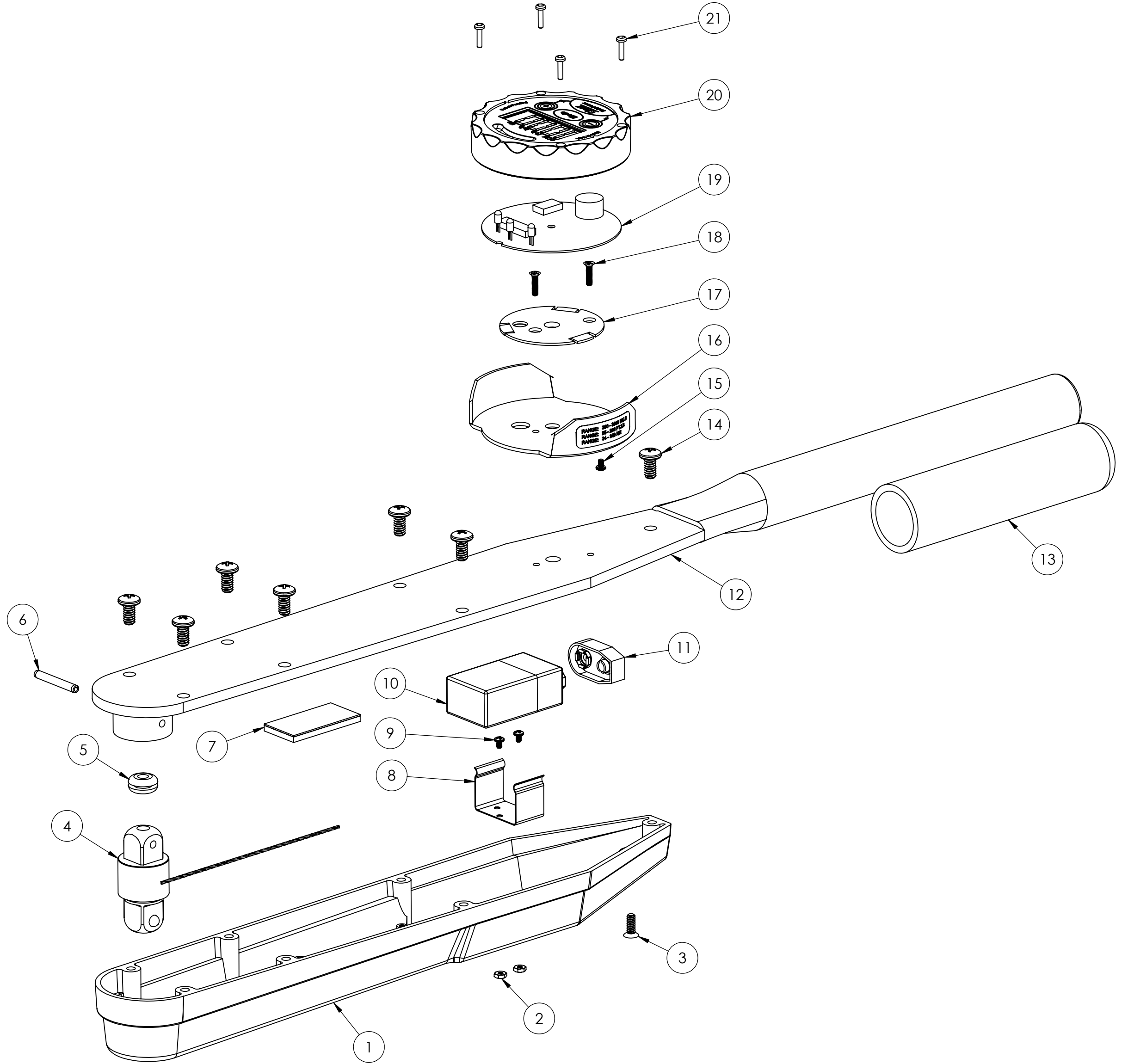


ELECTRONIC TORQUE WRENCH		
JETCO MODEL NO.	ED-100F	ED-250F
TORQUE RANGE	10-100 ft-lb (120 - 1200 in-lb) (13.5 - 135 N-m)	25 - 250 ft-lb (300 - 3000 in-lb) (34 - 340 N-m)
DRIVE SIZE	1/2"	1/2"

REVISIONS				
REV	DESCRIPTION	BY	APVD	DATE
A	INITIAL RELEASE	D.M.	D.M.	2/6/19

ITEM NO.	DESCRIPTION	QTY / ASSY	BILL OF MATERIALS	
			ED-100F	ED-250F
1	HOUSING	1	38-0011	
2	NUT	2	60-0012	
3	BATTERY COVER SCREW	1	60-0017	
4	DRIVE	1	38-0057	38-0020
5	RUBBER GROMMET	1	81-0045	
6	SPRING PIN	1	60-0051	
7	ADHESIVE TAPE	1	60-0097	
8	BATTERY HOLDER	1	81-1037	
9	BATTERY HOLDER SCREW	2	60-0010	
10	9V BATTERY	1	810045	
11	9V CONNECTOR	1	91-1048	
12	TOP PLATE ASSY	1	38-0022	
13	RUBBER GRIP	1	81-0111	
14	TOP PLATE SCREW	7	60-0018	
15	SCREW	1	60-0010	
16	DIAL GUARD	1	81-0076	
17	FIXED SHELL	1	81-0073	
18	SCREW	2	60-0065	
19	PCBA BOARD	1	70-300	
20	KEYPAD ASSY	1	38-0083	
21	BEZEL SCREW	4	60-0047	



UNCONTROLLED COPY
THE INFORMATION IN THIS DOCUMENT IS SUBJECT TO CHANGE WITHOUT NOTICE

UNLESS OTHERWISE SPECIFIED DIMENSIONS ARE IN INCHES



TITLE ELECTRONIC TORQUE WRENCH SPARE PARTS DIAGRAM			
DWG NO. 35-0010	REV A	SHEET 1 OF 2	SIZE C

NOTES:

① PIN MARK SERIAL NUMBER IN THE LOCATION SHOWN. LASER ETCH MODEL NUMBER AND LOGO IF APPLICABLE.

APPLY THE FOLLOWING LABELS TO THE ASSIGNED LOCATIONS:

② RANGE: 300 - 3000 IN.LB
 RANGE: 25 - 250 FT.LB
 RANGE: 34 - 340 NM



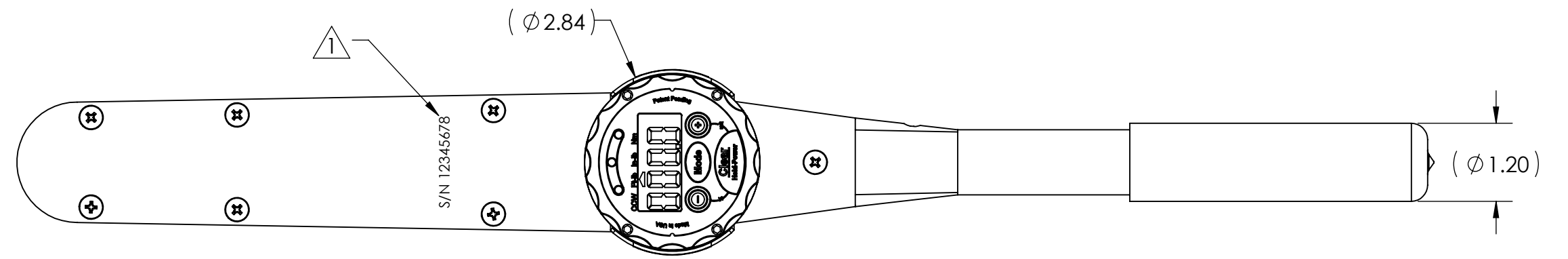
④ Torque Wrench
 MADE IN USA

⑤ 9 VOLT
 BATTERY INSIDE COVER

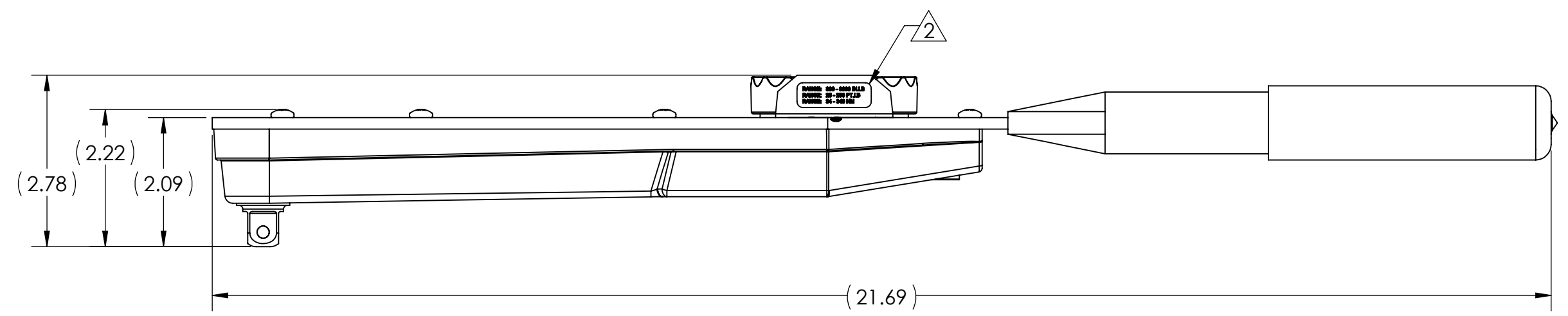
6 FOR REFERENCE:



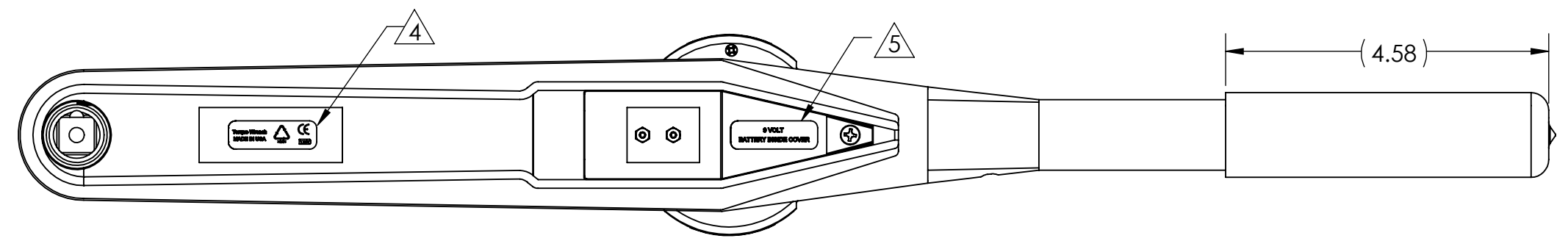
KEYPAD DETAIL



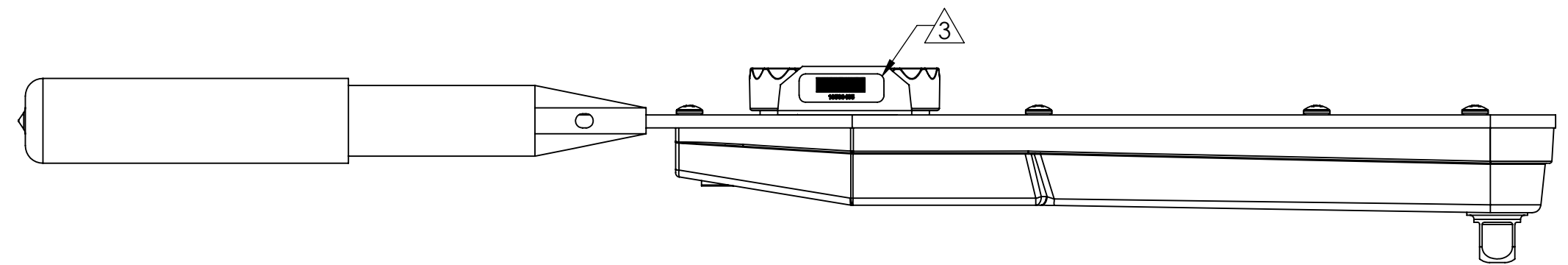
TOP VIEW



LEFT SIDE VIEW



BOTTOM VIEW



RIGHT SIDE VIEW

UNCONTROLLED COPY
 THE INFORMATION IN THIS DOCUMENT IS SUBJECT TO CHANGE WITHOUT NOTICE

UNLESS OTHERWISE SPECIFIED DIMENSIONS ARE IN INCHES



TITLE		
ELECTRONIC TORQUE WRENCH SPARE PARTS DIAGRAM		
DWG NO.	REV	SHEET
35-0010	A	2 OF 2
SIZE		C